

ITPI has signed an MOU with CSE to collaborate as knowledge partner. Circulated to ITPI Members for Participation



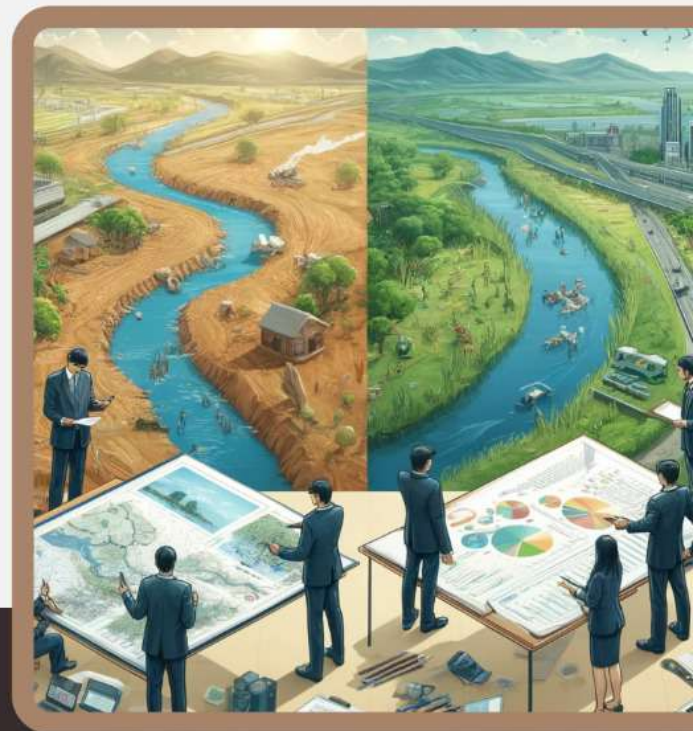
Centre for Science and Environment

TRAINING PROGRAMME ON ENVIRONMENTAL IMPACT ASSESSMENT

Includes sessions on methodology for preparing an EIA, approach for baseline data collection, identification and assessment of impacts along with the Environmental Clearance process

WHO CAN APPLY

Industry professionals; environment consultants; environment engineers; researchers; academicians, civil society; NGOs and students aspiring to work in the field of environment.



COURSE DATE
JANUARY 14-23, 2025

REGISTER NOW

[Click here](http://www.cseindia.org) for registration
www.cseindia.org

COURSE FEE

- Indian participants: INR 3000
- Non-Indian participants: USD 100